

One Platform, INFINITT Possibilities

INFINITT Healthcare

One Platform, INFINITT Possibilities

INFINITT Healthcare

Company Profile

Founded	December 2002
Type	Public (listed on the Korean Exchange)
Headquarters	Seoul, Korea
Business	Medical software products & services development
Key products	PACS, VNA, cloud services
Global offices	U.S, Japan, China, Taiwan, Malaysia, UAE, Germany, U.K, Brazil
Employees	536 (2020)
Market share	75% of large hospitals (Korean PACS market, 2020)

History

Take a look at how INFINITT has walked the path of innovation.

2002 – 2008

Opening an era of medical data digitalization

2002

Founded INFINITT Healthcare
Released STARPACS

2003

Founded INFINITT Taiwan

2004

Released STARPACS Dental
Founded INFINITT Japan, INFINITT China

2006

Released INFINITT CIS
Received Frost & Sullivan Asia Pacific Healthcare Best Practice Award

2008

Released INFINITT Cardiology PACS, INFINITT Mammo PACS,
INFINITT Report, Xelis, Xelis Dental, INFINITT TeleRadiology Solution

2009 – 2014

Growing into a global healthcare IT leader

2009

Released INFINITT RT PACS, INFINITT RTIS, INFINITT Ophthalmology
Founded INFINITT Europe, INFINITT South East Asia
INFINITT PACS received No.1 Best in KLAS Award for Community Hospitals
Received Frost & Sullivan Asia Pacific Healthcare Best Practice Award

2010

Listed on KOSDAQ
Founded INFINITT UK
INFINITT PACS received No.1 Best in KLAS Award for Community Hospitals
Received Frost & Sullivan Asia Pacific Customer Value Enhancement
Award for Medical Imaging Solution

2011

Released INFINITT Mobile Viewer, INFINITT ULite
Founded INFINITT Middle East Africa, INFINITT Brazil
INFINITT PACS received No.1 Best in KLAS Award for Community Hospitals

2012

INFINITT PACS received No.1 Best in KLAS Award for Community Hospitals

2013

Released INFINITT Web Portal Worklist, INFINITT DoseM, INFINITT
Communicator
INFINITT PACS received No.1 Best in KLAS Award for Ambulatory Hospitals

2014

Received Frost & Sullivan Asia Pacific PACS Company of the Year Award

2015 – Present

Presenting a new paradigm in healthcare IT

2015

Released INFINITT Healthcare Platform, INFINITT PACS M6

2016

Released INFINITT Enterprise Search
INFINITT PACS received No.1 Best in KLAS Award for
Ambulatory/Community Hospitals

2017

INFINITT PACS received No.1 Best in KLAS Award for Ambulatory
Hospitals

2018

INFINITT PACS received No.1 Best in KLAS Award for Imaging
Centers/Ambulatory/Community Hospitals

2019

INFINITT PACS received No.1 Best in KLAS Award for Imaging
Centers/Ambulatory/Community Hospitals

2020

Released INFINITT Smart Endo
Received Frost & Sullivan Asia Pacific Enterprise Imaging
Informatics Company of the Year

Financial Highlights

INFINITT creates a virtuous cycle by reinvesting profits earned into developing better products & services.

For year ended December 31

USD, values in 000's

	2018	2019	2020
Total Revenue	58,453	63,713	59,378
Operating Income	2,137	6,067	6,172
Net Income	4,396	6,236	5,650



Strengths Roadmap Product Lineup

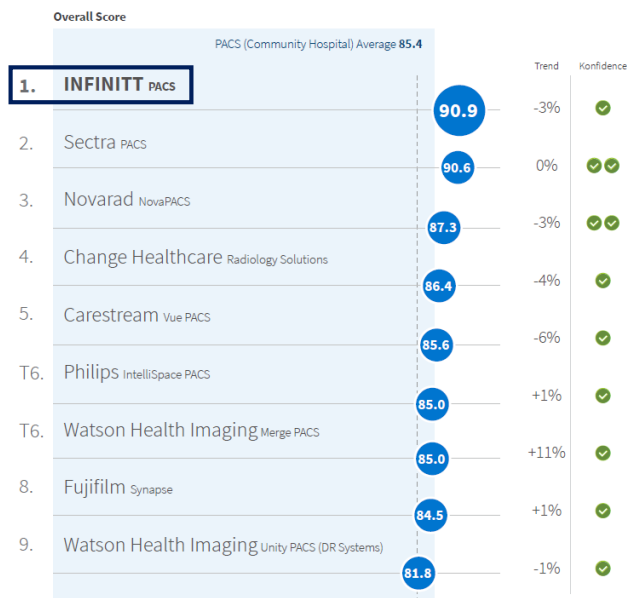


Strengths INFINITT's strength lies in its customer-oriented business and innovative technologies.

Customer-Oriented

Customers are the basis for our decision-making. We always take customer feedback seriously, reflecting them in product development. This customer-oriented business management has earned us the annual Best in KLAS: Software & Services PACS Award 12 times.

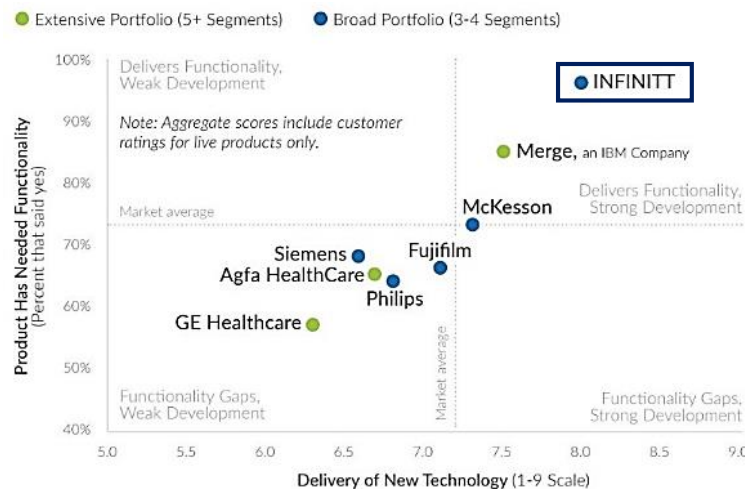
How do **PACS (Community Hospital)** solutions compare?



Best in KLAS Software & Services 2019

Leading Innovation

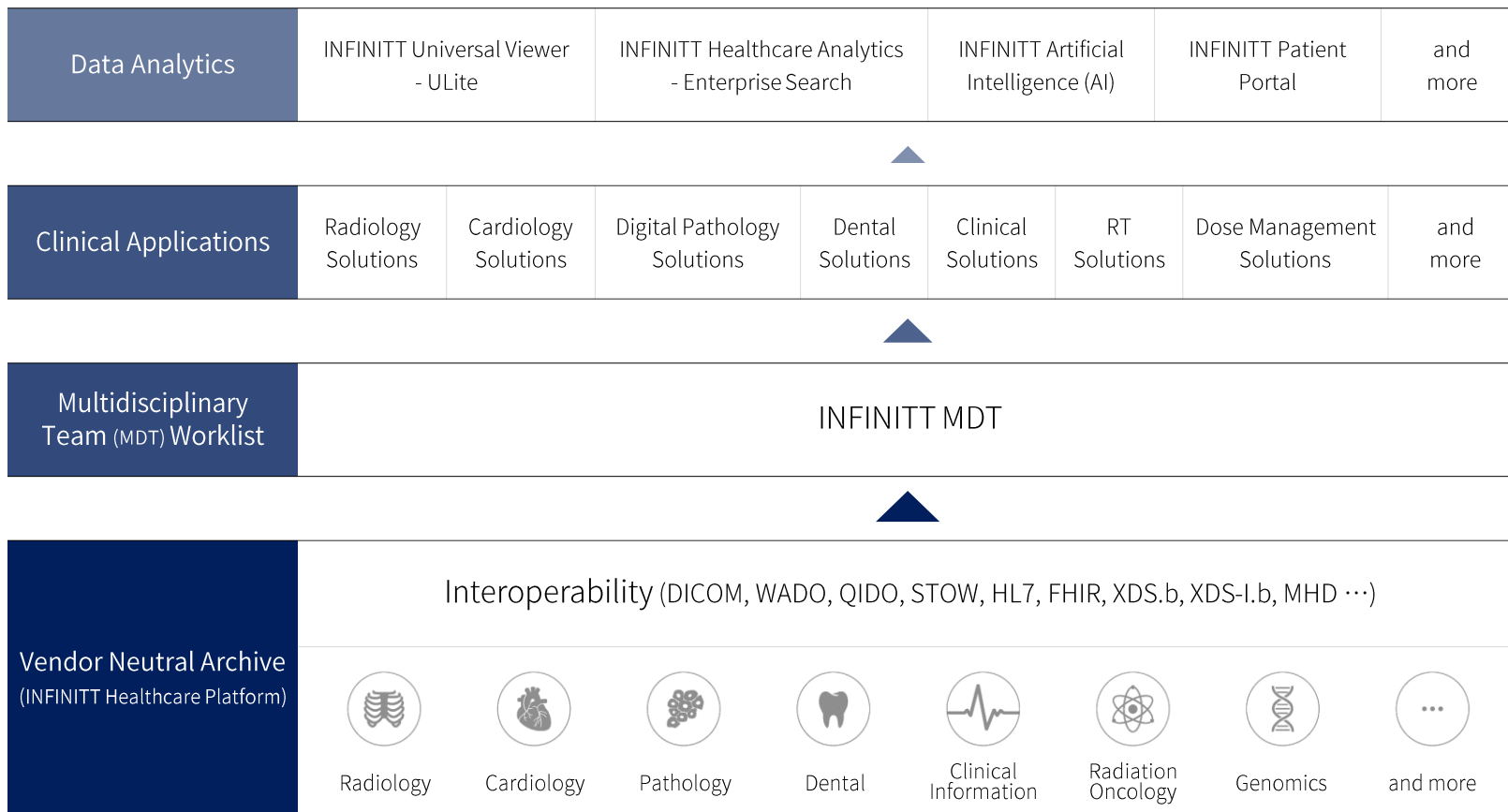
We are at the forefront of healthcare industry, bringing big data platforms and AI-incorporated solutions to the market. According to the KLAS report, INFINITT ranked higher than Siemens, Philips and GE Healthcare in the categories of new technology delivery and product functionality.



IMAGING IT LANDSCAPE 2016 ENTERPRISE PLATFORM: THE NEXT NIRVANA?
KLAS PERFORMANCE REPORT, MARCH 2016

Roadmap

INFINITT proactively responds to the fast-changing industry trends such as big data application, multidisciplinary and patient-centered care.



Product Lineup

INFINITT continuously invests in R&D to diversify its technologies and products.

Radiology	Clinical Solutions	Artificial Intelligence	Enterprise Imaging
PACS	Cardiology PACS	AI-enabled colonoscopy	Vendor neutral archive
RIS	Digital pathology solution		Universal viewer
Report search solution	3D diagnosis support solution		Ecosystem
Dose management solution	Dental PACS		
Reporting solution	Radiation oncology PACS		
Fault prevention solution	Radiation oncology information solution		
Mobile viewer	Clinical information solution		
Mammography PACS	Ophthalmology PACS		
Cloud PACS	Vet PACS		
Cloud backup			
Teleradiology solution			



[illegible]

Global Network

INFINITT provides optimized solutions & services through its local and global offices.



- ① INFINITT headquarters - Korea
- ② INFINITT Japan
- ③ INFINITT China
- ④ INFINITT Taiwan
- ⑤ INFINITT South East Asia
- ⑥ INFINITT Indonesia
- ⑦ INFINITT Middle East Asia
- ⑧ INFINITT Europe
- ⑨ INFINITT France
- ⑩ INFINITT UK
- ⑪ INFINITT North America
- ⑫ INFINITT Brazil

Exhibitions

INFINITT meets up with its customers face-to-face, listens to what they have to say and reflects the insights gained into its products.

Arab Health	PACS, digital pathology solution, Enterprise Imaging
HIMSS Healthcare Information and Management Systems Society	Enterprise Imaging
ECR European Congress of Radiology	Dose management solution, PACS, Enterprise Imaging
USCAP United States and Canadian Academy of Pathology	Digital pathology solution, Enterprise Imaging
ACC American College of Cardiology	Cardiology PACS, Enterprise Imaging
ITEM International Technical Exhibition of Medical Imaging	Dose management solution, PACS, Enterprise Imaging
KSP Korean Society of Pathologists	Digital pathology solution, Enterprise Imaging
KCR Korean Congress of Radiology	PACS, digital pathology solution, Enterprise Imaging
RSNA Radiological Society of North America	PACS, digital pathology solution, Enterprise Imaging



6,300 Medical Facilities in 55 Countries (2020)

St. Joseph's Health

U.S.



INFINITT PACS 2007

INFINITT Mammo PACS 2007

Prime Healthcare Services

U.S.



INFINITT PACS 2008

INFINITT Mammo PACS 2008

INFINITT Cardiology PACS 2012

INFINITT Healthcare Platform 2014

ULite (Universal viewer) 2016

Universitätsklinikum
Magdeburg A. ö. R.

Germany



INFINITT PACS 2008

Xelis (3D diagnosis support solution) 2008

INFINITT DoseM (Dose management solution) 2018

Seoul National Univ.
Hospital

Korea



INFINITT PACS 2001

INFINITT CIS 2006

INFINITT RT PACS 2008

Xelis (3D diagnosis support solution) 2011

INFINITT DoseM (Dose management solution) 2014

6,300 Medical Facilities in 55 Countries (2020)

Kurume Univ. Hospital

Japan



INFINITT PACS	2015
INFINITT Cardiology PACS	2015
INFINITT Web Portal Worklist	2015
ULite (Universal viewer)	2016
INFINITT RT PACS	2018

China Medical Univ.
Hospital

Taiwan



INFINITT PACS	2012
INFINITT Consolidated Server	2012
INFINITT Distributed Server	2012
INFINITT Mobile Viewer	2012
INFINITT Mammo PACS	2012
INFINITT Cardiology PACS	2015

Dr. Burger
Radiologist Inc.

South Africa



INFINITT PACS	2015
INFINITT RIS	2015
INFINITT Mobile Viewer	2015

Japan	Nakagami Hospital
Malaysia	Ramsay Sime Darby Healthcare
Taiwan	China Medical University Hospital
Singapore	Parkway Group Hospitals
Brazil	Hospital Cruz Azul de São Paulo
Peru	Hospital de Emergencias Villa El Salvador
Germany	Universitätsklinikum Magdeburg A. ö. R.
Germany	Städtische Kliniken Neuss - Lukaskrankenhaus - GmbH
Germany	Klinikum St. Georg gGmbH - Leipzig
Poland	LUX MED Group Sp. z o.o
Croatia	Klinicka Bolnica Dubrava, Zagreb
Croatia	Opca Bolnica Dubrovnik
UAE	Sheikh Khalifa Specialty Hospital
Turkey	Marmara University Pendik Training & Research Hospital
South Africa	Dr. Burger Radiologists Inc.

75% PACS Market Share for Korean Large Hospitals (2020)

Seoul National Univ. Hospital



INFINITT PACS 2001

INFINITT CIS 2006

INFINITT RT PACS 2008

Xelis (3D diagnosis support solution) 2011

INFINITT DoseM (Dose management solution) 2014

Samsung Medical Center



INFINITT PACS 2005

INFINITT CIS 2007

Xelis (3D diagnosis support solution) 2009

INFINITT RT PACS 2014

INFINITT Digital Pathology Solution 2019

Korea Univ. Hospital



Xelis (3D diagnosis support solution) 2001

INFINITT PACS 2003

INFINITT CIS 2015

INFINITT Cardiology PACS 2017

INFINITT DoseM (Dose management solution) 2015

Seoul St. Mary's Hospital



INFINITT PACS 2003

Xelis (3D diagnosis support solution) 2008

INFINITT CIS 2009

Asan Medical Center



Xelis (3D diagnosis support solution) 2008

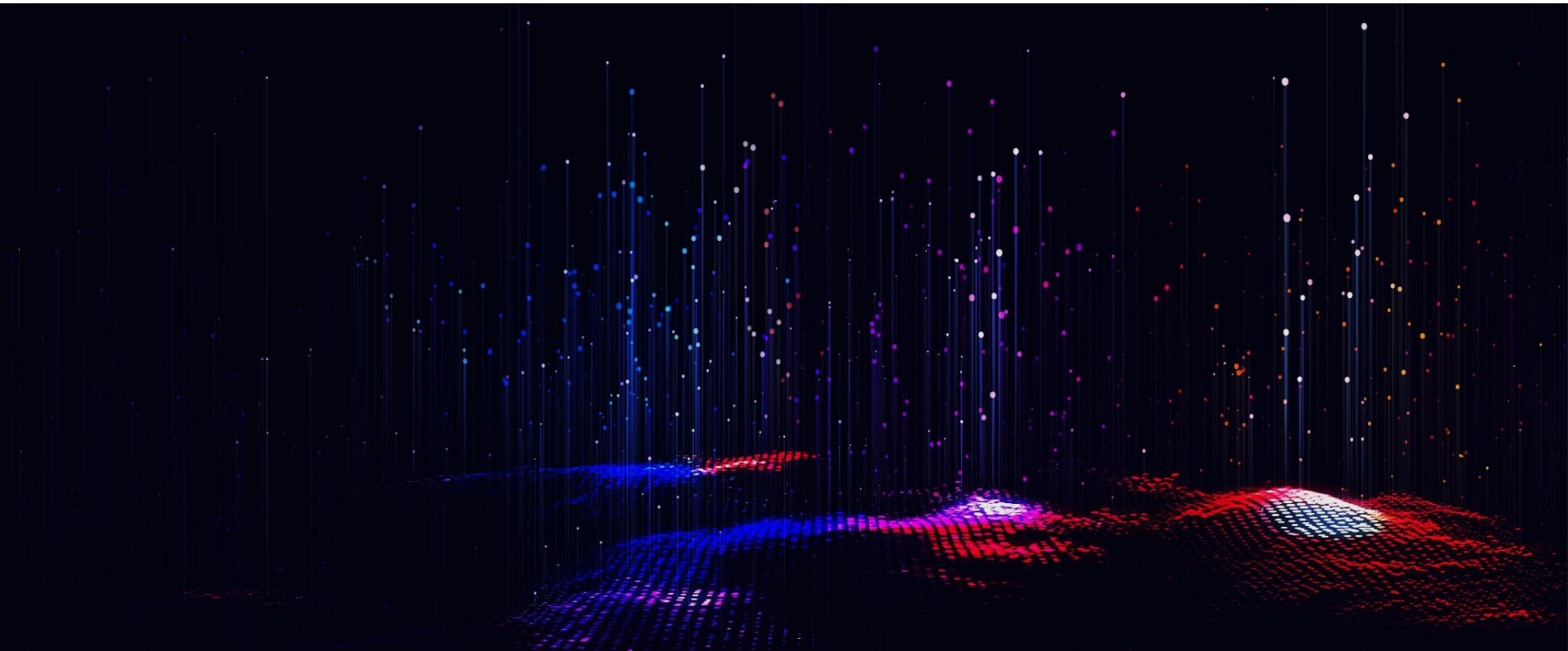
Infinitt Cafe

INFINITT Culture



INFINITT Healthcare contributes to mankind's health through analysis of meaningful data.

INFINITT provides PACS, data migration and system interface services optimized to each medical specialty. INFINITT released an integrated platform empowered with VNA, big data and AI technologies, and is currently focusing its resources on developing next-generation solutions that enable healthcare providers to practice multidisciplinary, patient-centered care by fully leveraging the medical data at hand.





As team INFINITT,

We take pride in that we have contributed to advancements in healthcare for the last 20 years.

We take pride in that more than 6,300 facilities worldwide are using our solutions to make accurate, data-driven diagnosis and provide patient care accordingly.

We feel a great sense of pride and responsibility on our shoulders, and this is what drives us forward everyday.

Employees	536 (2020)
R&D (%)	48%
Departments	R&D, sales, technical support, customer services, business support, etc.
Corporate Awards	Seoul's Excellent Employee-oriented Company Award (2019) Family-friendly Company Award (2019) Best Small and Medium Business Award (2020)



INFINITT Culture workshop

INFINITT Culture Campaign

We grow for the better, we do what's right, we work together and we never give up—these four core values define who we are and makes us stronger as team INFINITT.



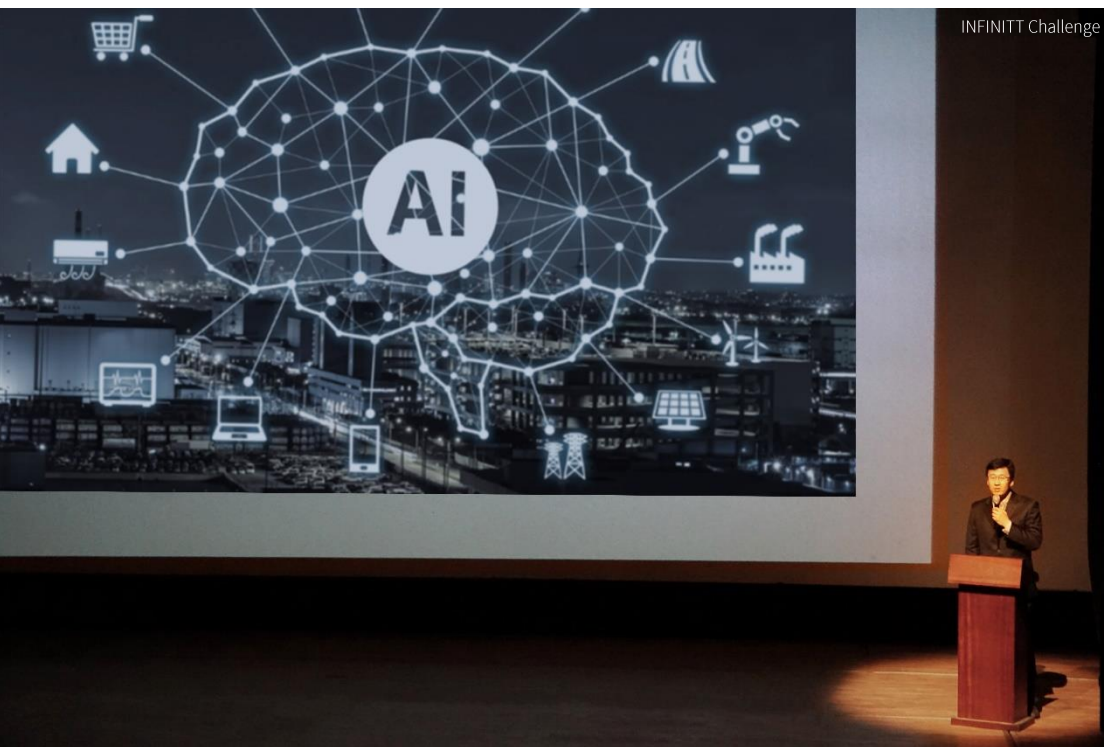
Culture campaign posters



INFINITT University: learning from one another

From customer service strategies to industry trends such as artificial intelligence and information security, we share our experiences and know-hows with each other.





INFINITT Challenge: heading towards the same direction

We review the past year's performance results, and make sure we're heading towards the same direction with the shared goals and strategies.



'Let's Go for Lunch' Campaign

Getting to know each other better

We regularly have social events like 'Let's Go for Lunch' and 'INFINITT Festival of Stars' which give us the opportunity to get to know each other better or express appreciation to fellow team members.





Work hard, play hard

The best performers of the year enjoy exclusive vouchers such as tickets to opening ceremony of the Pyeongchang Winter Olympics (2018) or tickets to home matches of Eintracht Frankfurt football team (INFINITT partner 2016-17).



Taking social responsibilities

We feel responsible for social issues like sustainability and equality.
So we take small yet meaningful actions through our CSR campaigns.



Stay tuned. INFINITT continues to make a difference in healthcare.

Stay tuned. INFINITT continues to make a difference in healthcare.

Team INFINITT shares a single DNA

We do what matters with passion and resilience

Defines who we are, whom we'd like to work with,
and how we're assessed and rewarded.

We grow for the better

Be better today than yesterday.
Minimize inefficiencies and focus on what really matters.

We do what's right

Doing the right thing is the shortcut to success.
Always remember to do what's right.

We work together

Ordinary people make extraordinary results together.
Talk to each other and actively take roles.

We never give up

Be bold. Do not fear change.
Keep trying and learn something new everyday.